

For Sale

**1802 Wooddale Drive
Woodbury MN 55125**



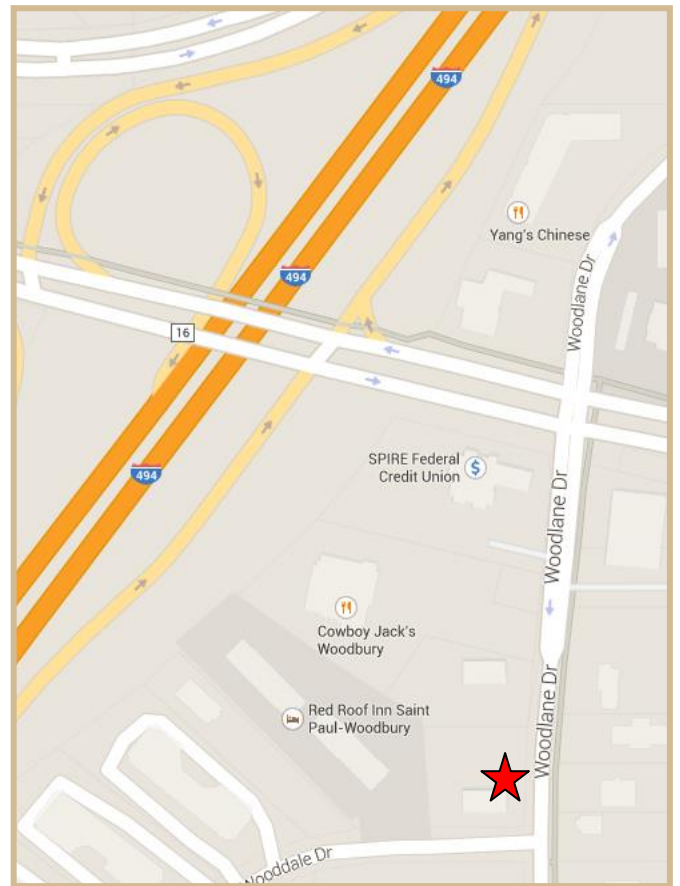
PROPERTY DETAILS

**Woodlane Executive
Office Building**

Building Size: 8,010 SF
Year Built: 1980
Sale Price: \$975,000
Taxes: \$2.75/SF

- **Zoning – B1 Office Park District**
- **Located in Woodbury off of Valley Creek Road & 494**
- **Ideal owner-user opportunity**

LOCATION



Mark Young
Vice President, Sales and Leasing
Direct | 651-233-2435
Mobile | 651-307-2371

John Higgins
Vice President, Sales and Leasing
Direct | 651-209-0520
Mobile | 612-702-3104

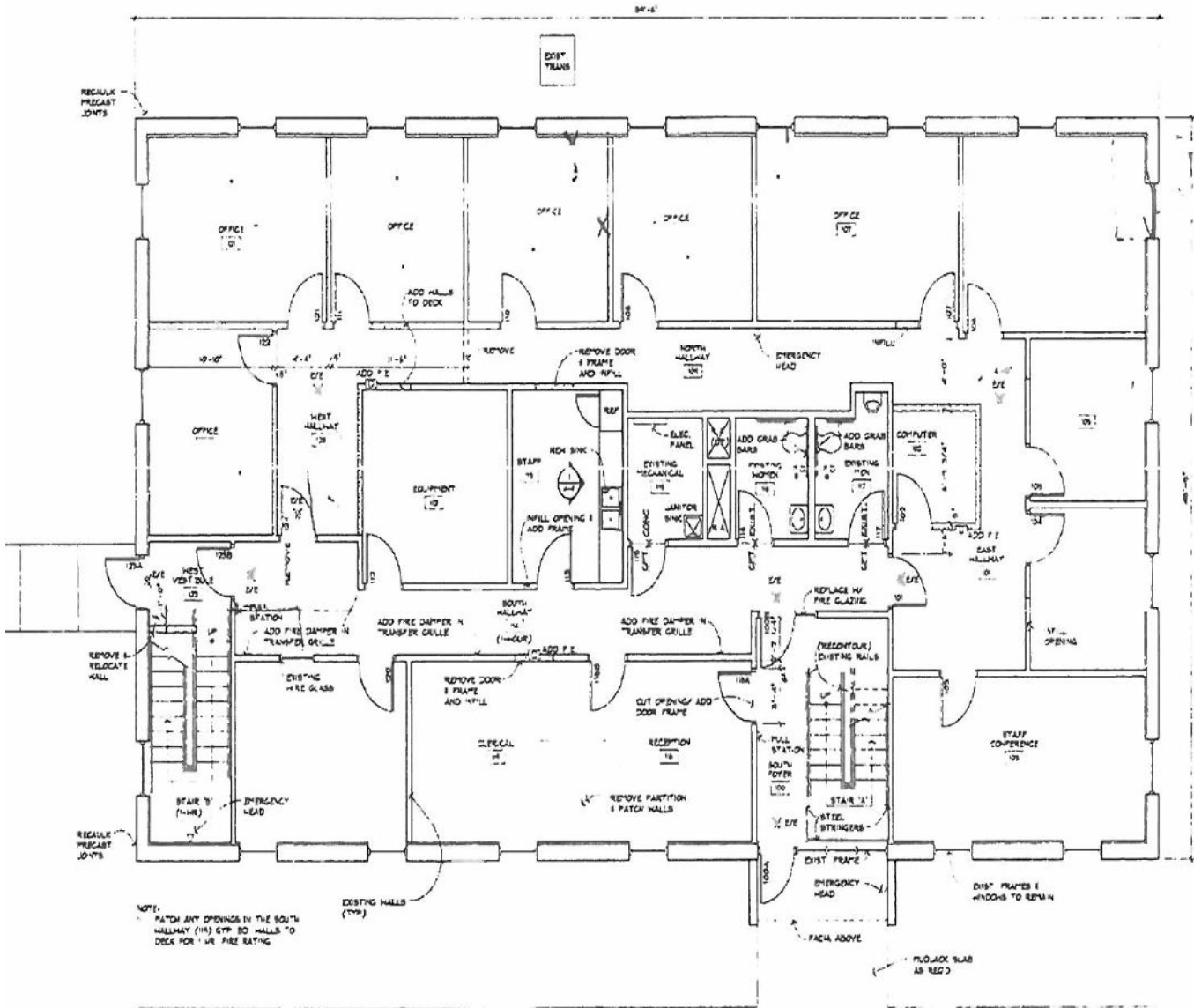
7300 Hudson Blvd., Suite 210
Oakdale, MN 55128
Main | 651-731-0708
Fax | 651-735-1228
www.crossroadsproperties.net

**CROSSROADS
PROPERTIES**

For Sale

1802 Wooddale Drive Woodbury MN 55125

FLOOR PLANS



MAIN LEVEL PLAN
SCALE: 1/4" = 1'-0"
3,750 SQ FT (GROSS)
4,045 SQ FT (TOTAL)
PARKING - 15 STALLS WEST -
9 STALLS SOUTH -
2 BARRIER FREE

Mark Young
Vice President, Sales and Leasing
Direct | 651-233-2435
Mobile | 651-307-2371

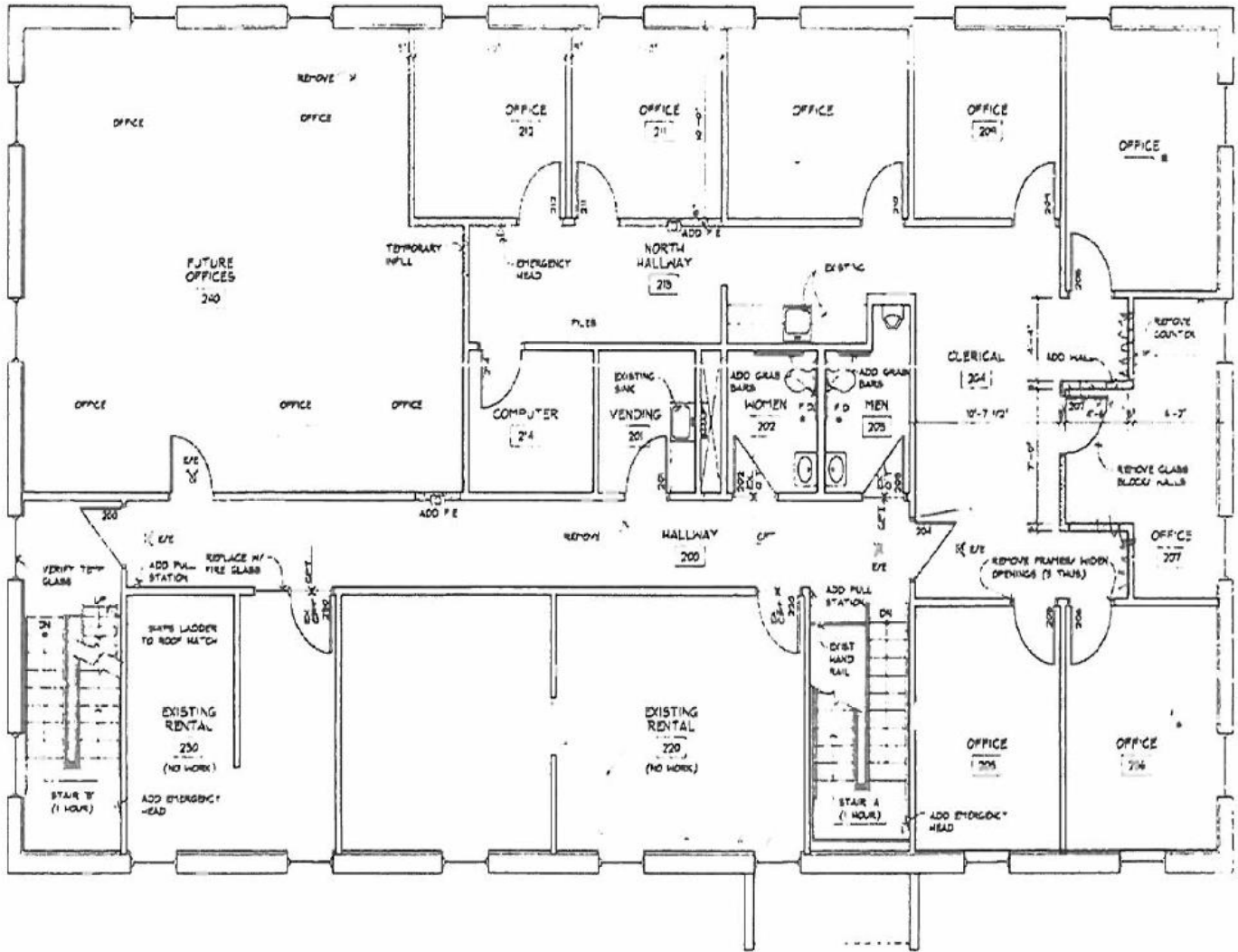
John Higgins
Vice President, Sales and Leasing
Direct | 651-209-0520
Mobile | 612-702-3104

7300 Hudson Blvd., Suite 210
Oakdale, MN 55128
Main | 651-731-0708
Fax | 651-735-1228
www.crossroadsproperties.net

CROSSROADS
PROPERTIES

For Sale

1802 Wooddale Drive
Woodbury MN 55125



3 SECOND LEVEL PLAN

SCALE: 1/4" = 1'-0"

Mark Young
Vice President, Sales and Leasing
Direct | 651-233-2435
Mobile | 651-307-2371

John Higgins
Vice President, Sales and Leasing
Direct | 651-209-0520
Mobile | 612-702-3104

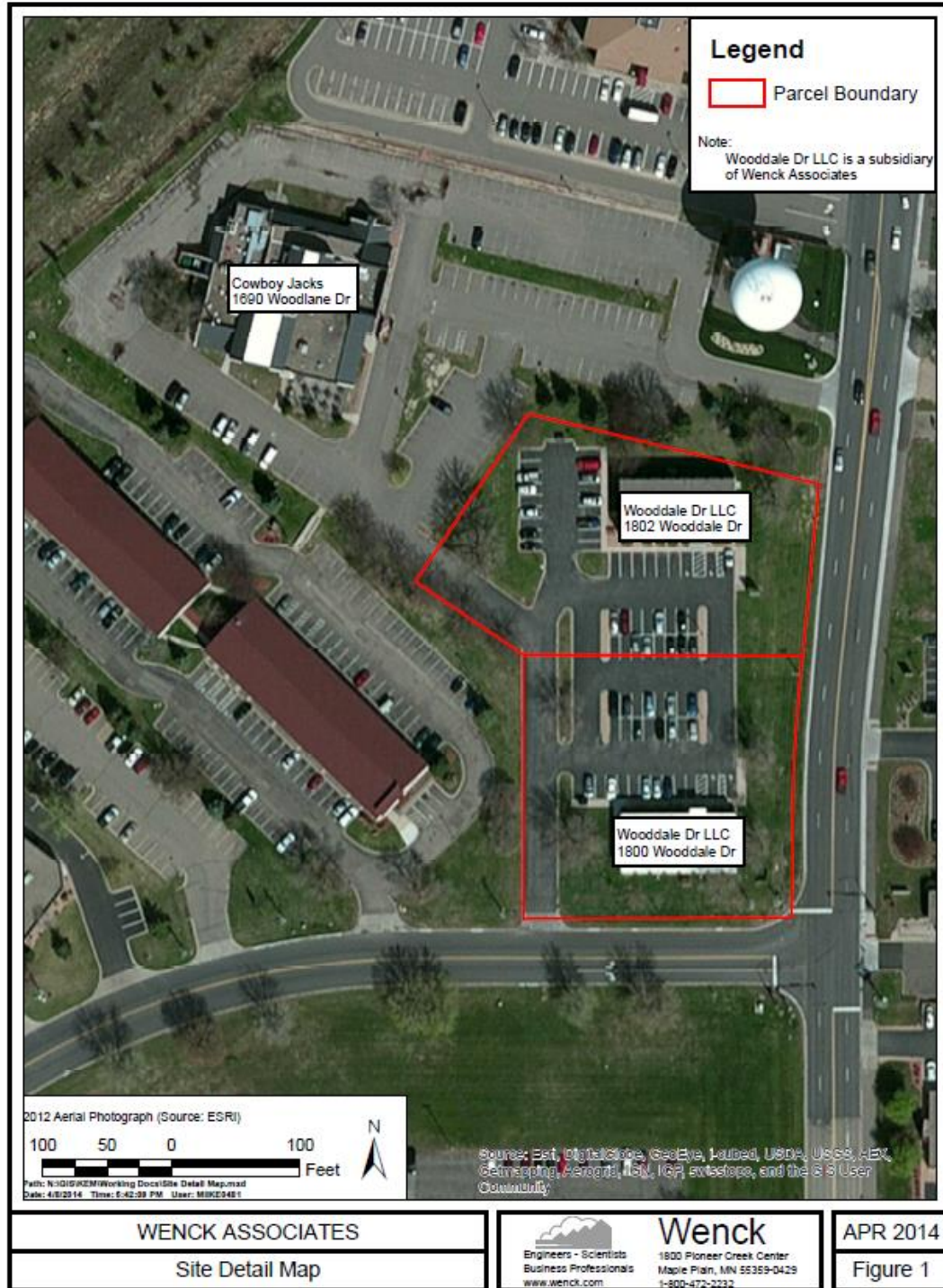
7300 Hudson Blvd., Suite 210
Oakdale, MN 55128
Main | 651-731-0708
Fax | 651-735-1228
www.crossroadsproperties.net

CROSSROADS PROPERTIES

For Sale

1802 Wooddale Drive Woodbury MN 55125

SITE DETAIL MAP



Mark Young
Vice President, Sales and Leasing
Direct | 651-233-2435
Mobile | 651-307-2371

John Higgins
Vice President, Sales and Leasing
Direct | 651-209-0520
Mobile | 612-702-3104

7300 Hudson Blvd., Suite 210
Oakdale, MN 55128
Main | 651-731-0708
Fax | 651-735-1228
www.crossroadsproperties.net

**CROSSROADS
PROPERTIES**